



Millbrooke
ESTATE AGENTS

7 Poynt Chase, Worsley
Offers Over £850,000

7 Poynt Chase

Worsley, Manchester

Millbrooke are delighted to bring to the market this impressive, detached four bedroom family home situated in a prestigious location in Worsley. Nestled on a gated plot within an attractive cul-de-sac this stunning property boasts superb accommodation within an enviable setting.

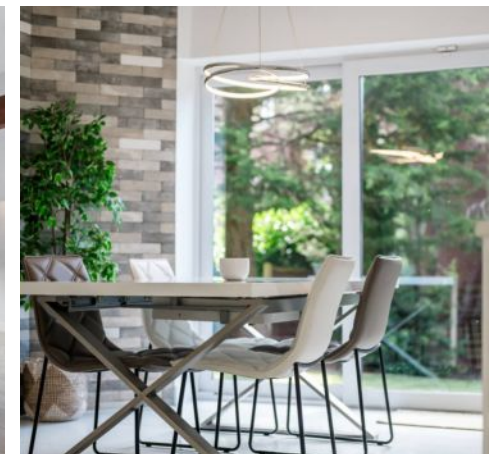
Council Tax band: G

Tenure: Leasehold

EPC Energy Efficiency Rating: C

EPC Environmental Impact Rating:

- Close to Worsley's historic sites, dining options, shopping hubs, and top-rated schools
- Prestigious location with excellent transport links and nice walks
- Four Bedrooms, Two En Suites & Family Bathroom
- Stunning Open Plan Kitchen/Sitting / Dining Area
- Fantastic, Spacious, Detached Home
- Driveway Providing Ample Off Road Parking
- Detached, Double Garage
- Presented to an Immaculate Standard
- Private Rear Garden, Not overlooked
- Utility Room and Guest W/C



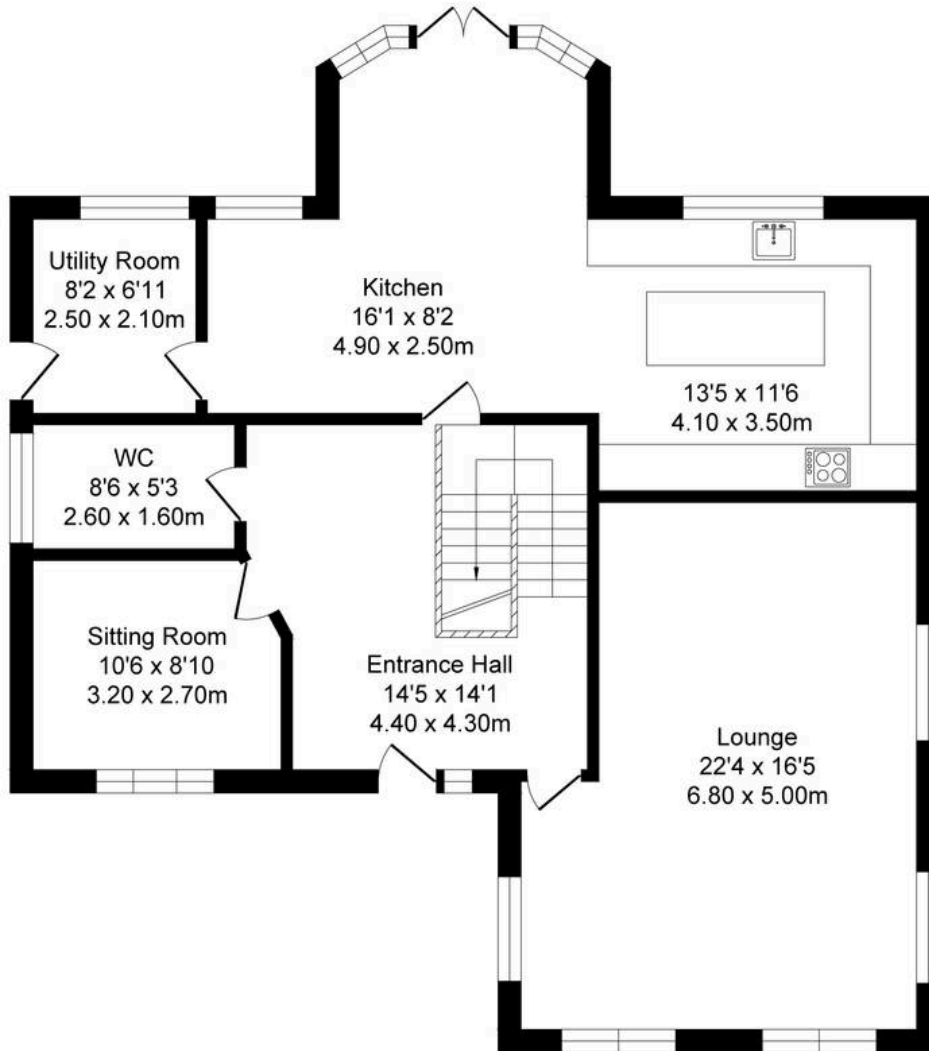




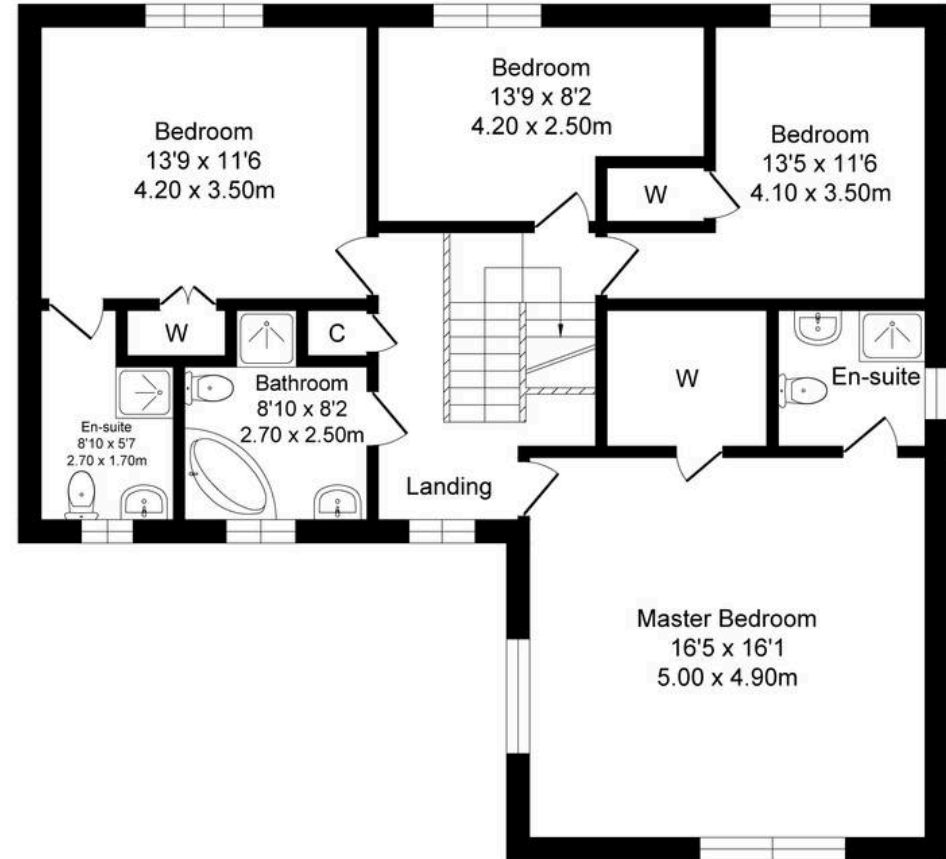
Poynt Chase, Worsley, Manchester

Total Approx. Floor Area 2132 Sq.ft. (198.1 Sq.M.)

Surveyed and drawn by Lens Media for illustrative purposes only. Not to scale. Whilst every attempt was made to ensure the accuracy of the floor plan, all measurements are approximate and no responsibility is taken for any error.



Ground Floor
Approx. Floor Area 1128 Sq.Ft (104.8 Sq.M.)



First Floor
Approx. Floor Area 1004 Sq.Ft (93.3 Sq.M.)



Millbrooke Estate Agents

271 Mosley Common Road, Worsley, Manchester - M28 1BZ

0161 790 5154 • hello@millbrooke.co • millbrooke.co

