



Millbrooke
ESTATE AGENTS

338 Worsley Road, Swinton
£850,000

338 Worsley Road

Swinton, Manchester

Millbrooke Estate Agents are delighted to bring to the market this exquisite three bedroom, freehold period property. Meadowbank cottage built circa 1819, oozes character throughout and is completed to an exceptional standard.

Council Tax band: D

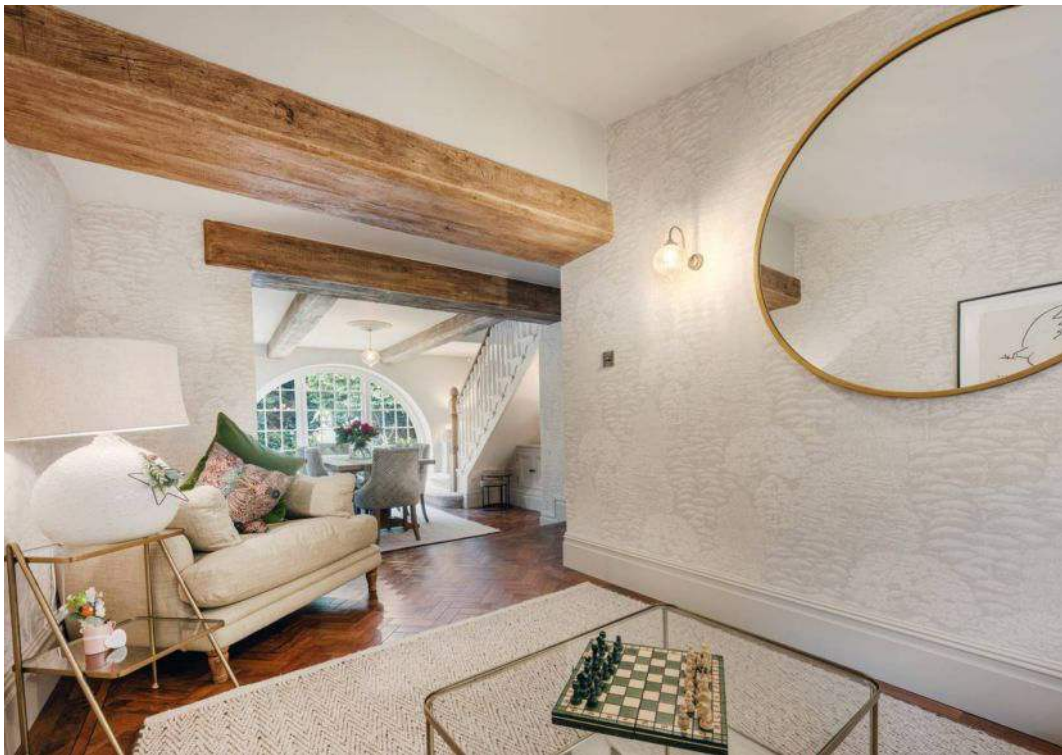
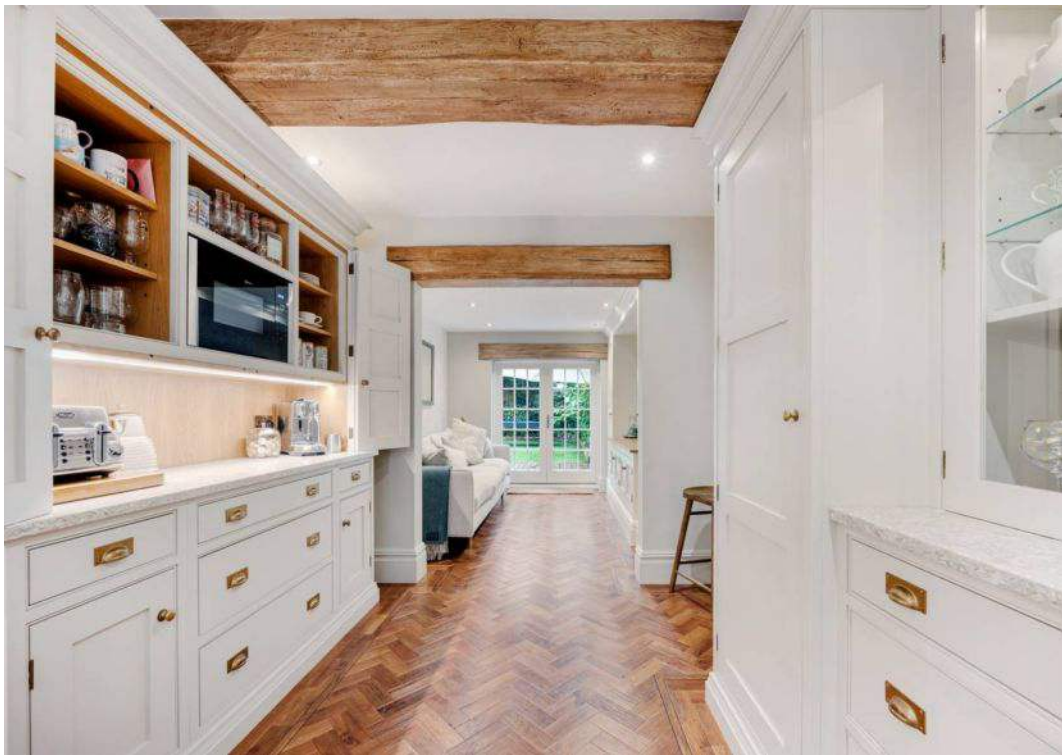
Tenure: Freehold

EPC Energy Efficiency Rating: E

EPC Environmental Impact Rating: F

- Georgian Cottage
- Presented to an Exceptional Standard
- Immaculate Renovation
- Excellent Specification Throughout
- Gated Driveway and Immaculate Gardens
- Character Property
- Three Double Bedrooms
- Many Local Amenities
- Incredible Attention to Detail



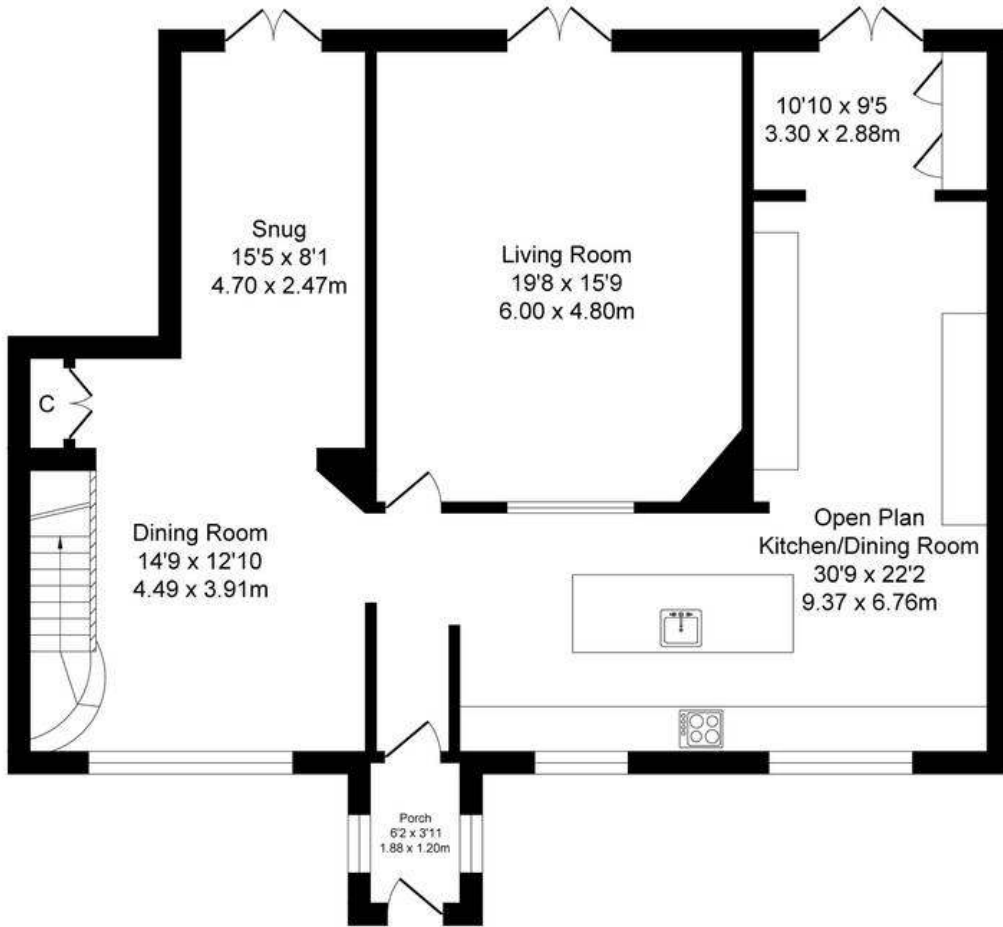
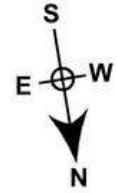




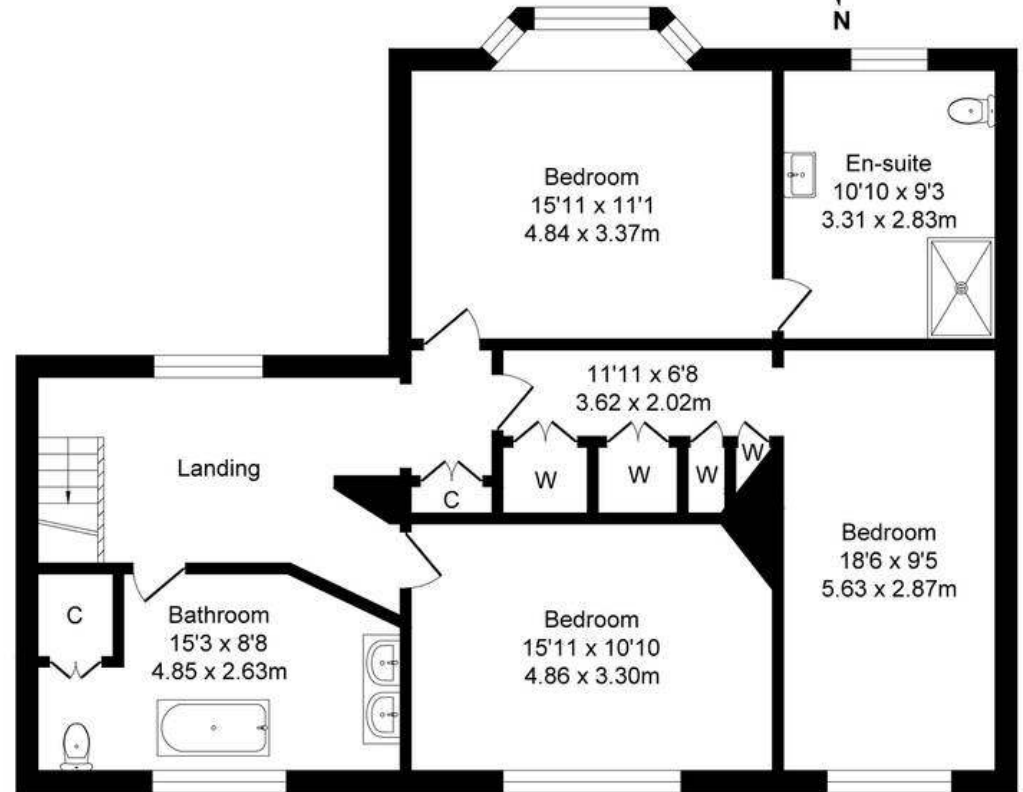
Worsley Road, Swinton

Total Approx. Floor Area 2314 Sq.ft. (215.0 Sq.M.)

Surveyed and drawn by Lens Media for illustrative purposes only. Not to scale. Whilst every attempt was made to ensure the accuracy of the floor plan, all measurements are approximate and no responsibility is taken for any error.



Ground Floor
Approx. Floor Area
1229 Sq.Ft
(114.2 Sq.M.)



First Floor
Approx. Floor Area
1085 Sq.Ft
(100.8 Sq.M.)



Millbrooke Estate Agents

271 Mosley Common Road, Worsley, Manchester - M28 1BZ

0161 790 5154 • hello@millbrooke.co • millbrooke.co

