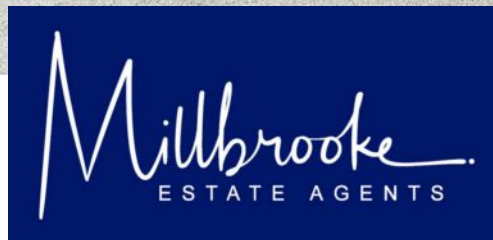




Millbrooke
ESTATE AGENTS
FOR SALE
01753 501514
www.millbrooke.co.uk



102 Ringlow Park Road, Swinton
£325,000

102 Ringlow Park Road

Swinton, Manchester

Millbrooke Estate Agents are delighted to bring to the market this fabulous three-bedroomed, semi-detached property, located in the much sought after area of Ringlow Park Road in South Swinton.

Council Tax band: B

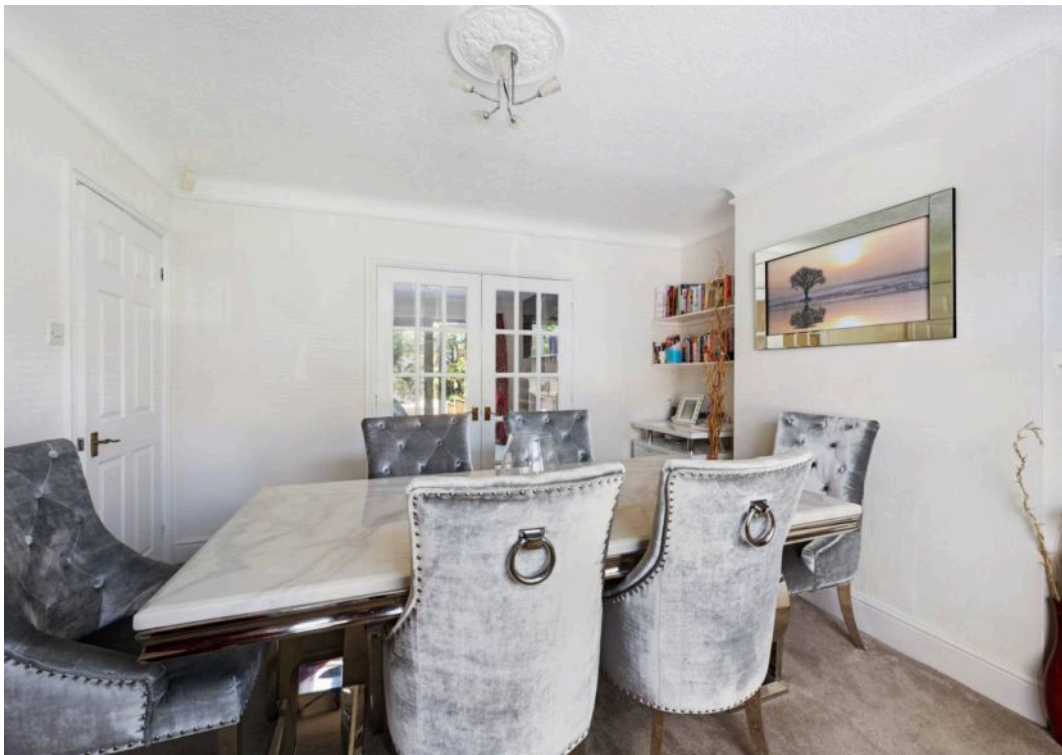
Tenure: Leasehold

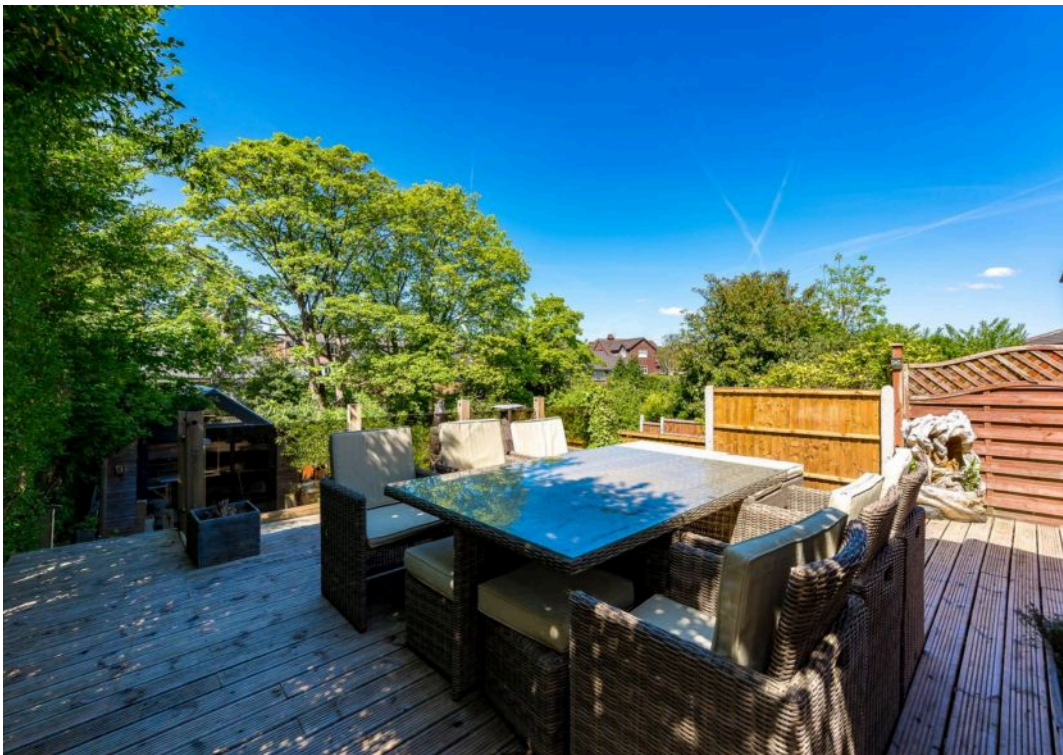
EPC Energy Efficiency Rating: D

EPC Environmental Impact Rating:

- Highly Desirable South Swinton Location
- Close to Broadoak Primary School
- Three Bedrooms
- Two Reception Rooms
- Stylish, Contemporary Bathroom
- Large Two-Tiered Garden with Decking Area
- Large Driveway
- Beautiful Garden Room / Summer House
- Many Local Amenities
- Excellent Transport Links



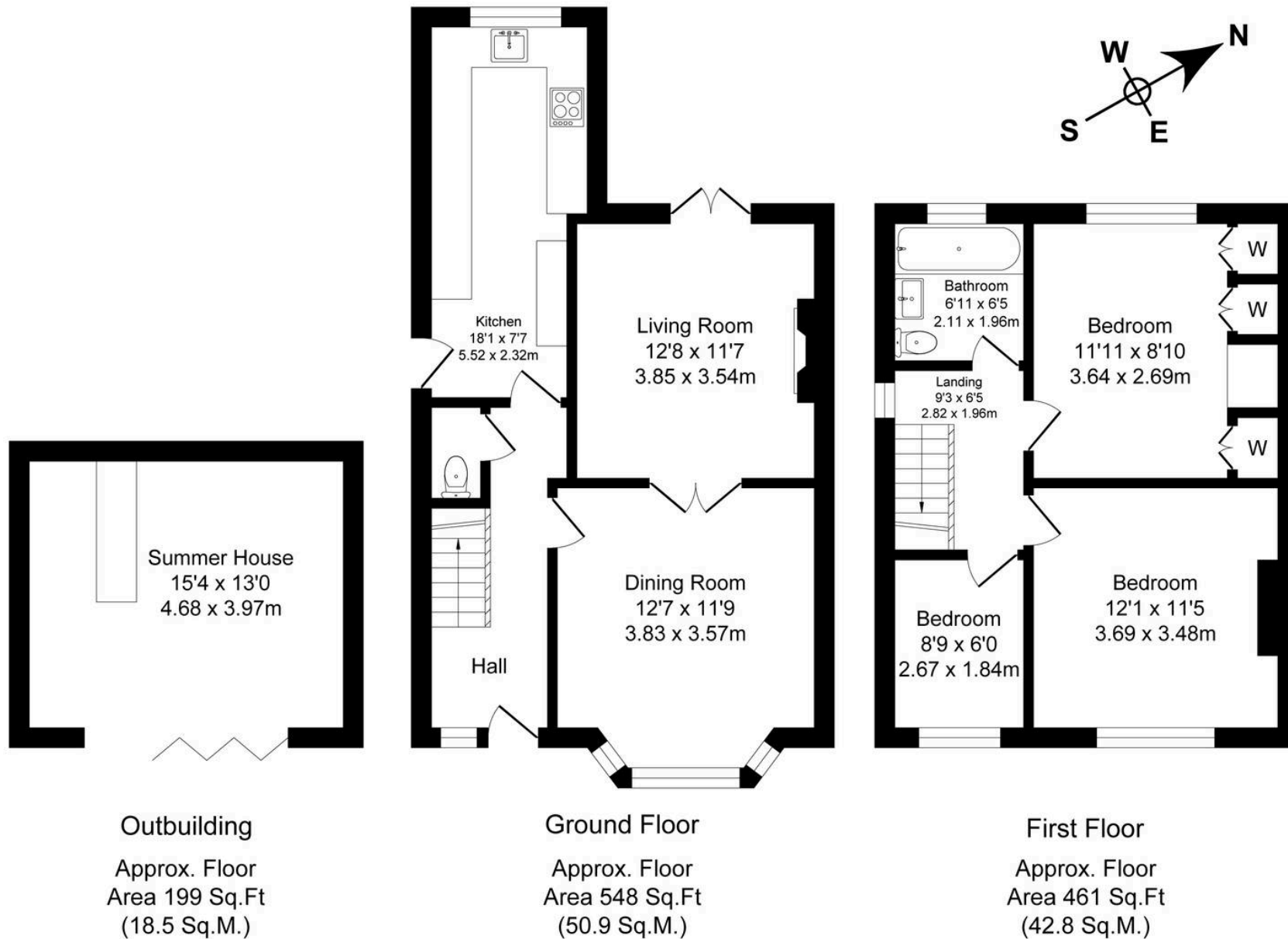




Ringlow Park Road, Swinton, Manchester

Total Approx. Floor Area 1208 Sq.ft. (112.2 Sq.M.)

Surveyed and drawn by Lens Media for illustrative purposes only. Not to scale. Whilst every attempt was made to ensure the accuracy of the floor plan, all measurements are approximate and no responsibility is taken for any error.





Millbrooke Estate Agents

271 Mosley Common Road, Worsley, Manchester - M28 1BZ

0161 790 5154 • hello@millbrooke.co • millbrooke.co

