

Millbrooke
ESTATE AGENTS

53 Lower Green Lane, Astley
£215,000

53 Lower Green Lane

Astley, Manchester

Millbrooke Estate Agents are delighted to offer for sale this garden fronted two-bedroom mid-terrace property in the heart of the sought-after and friendly village of Astley Green. Offered with the benefit of no onward chain, close to local schools and transport links, this is an ideal property for first-time buyers and investors alike.

Council Tax band: B

Tenure: Freehold

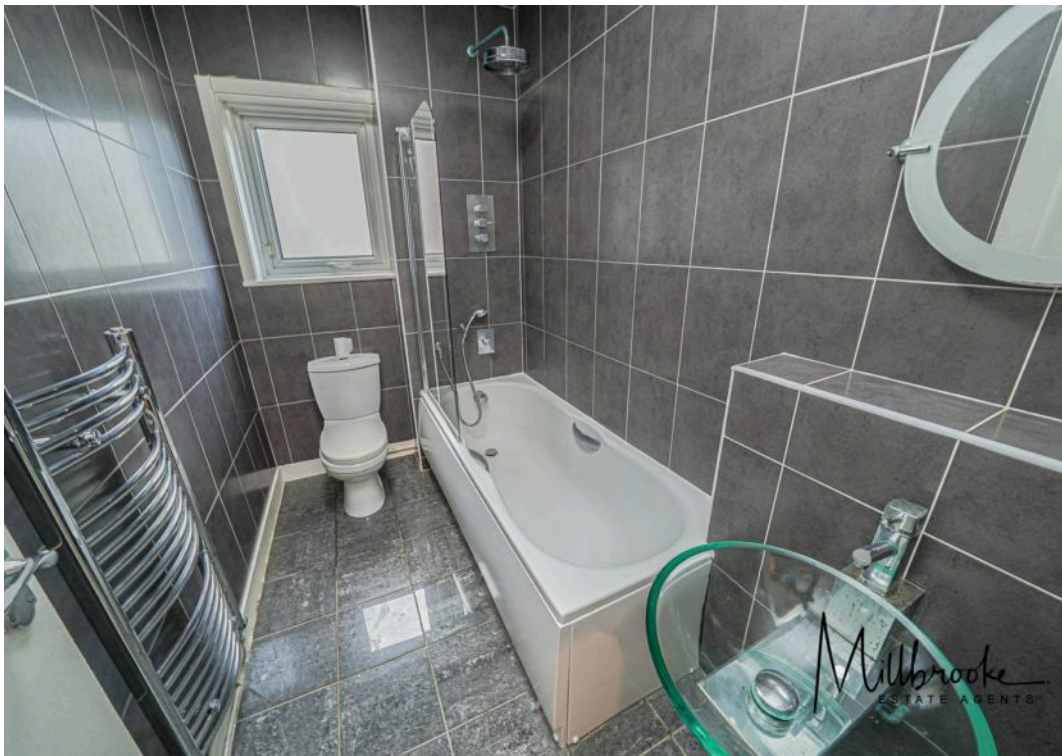
EPC Energy Efficiency Rating: C

EPC Environmental Impact Rating: D

- Prime Location In The Picturesque Village Of Astley Green
- Private Rear Garden That Is Not Overlooked
- Catchment Area For Reputable Schools
- Spacious Lounge
- Stylish Kitchen / Diner
- Two Double Bedrooms
- Shops and Amenities Nearby
- No Onward Chain!
- Freehold Property



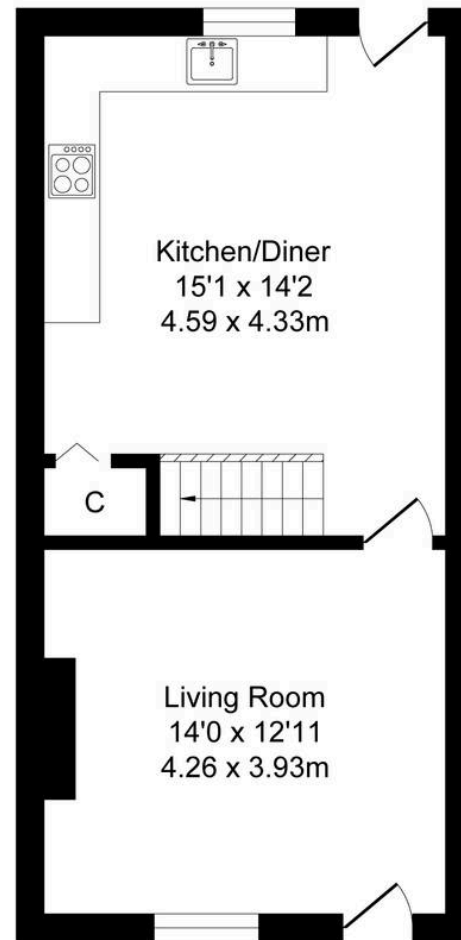




Lower Green Lane, Tyldesley

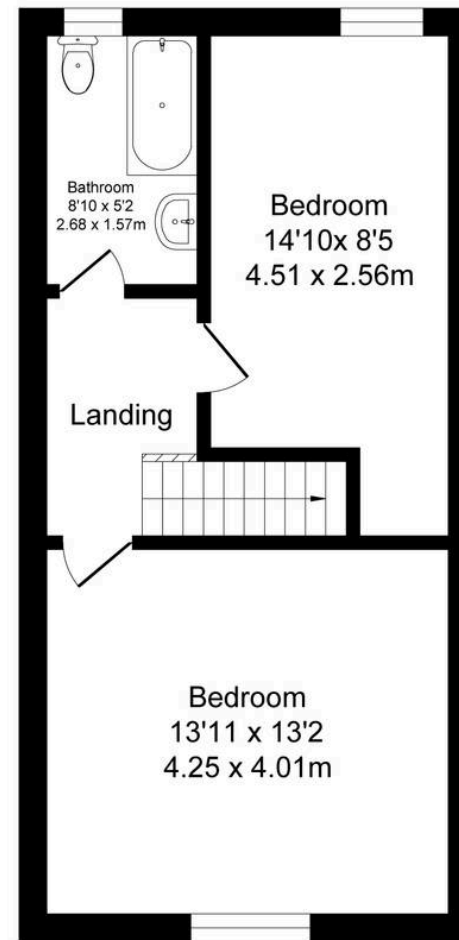
Total Approx. Floor Area 882 Sq.ft. (82.0 Sq.M.)

Surveyed and drawn by Lens Media for illustrative purposes only. Not to scale. Whilst every attempt was made to ensure the accuracy of the floor plan, all measurements are approximate and no responsibility is taken for any error.



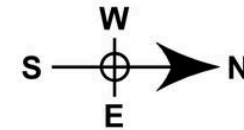
Ground Floor

Approx. Floor
Area 441 Sq.Ft
(41.0 Sq.M.)



First Floor

Approx. Floor
Area 441 Sq.Ft
(41.0 Sq.M.)





Millbrooke Estate Agents

271 Mosley Common Road, Worsley, Manchester - M28 1BZ

0161 790 5154 • hello@millbrooke.co • millbrooke.co

