

18 Ringlow Park Road, Swinton
£350,000

18 Ringlow Park Road

Swinton, Manchester

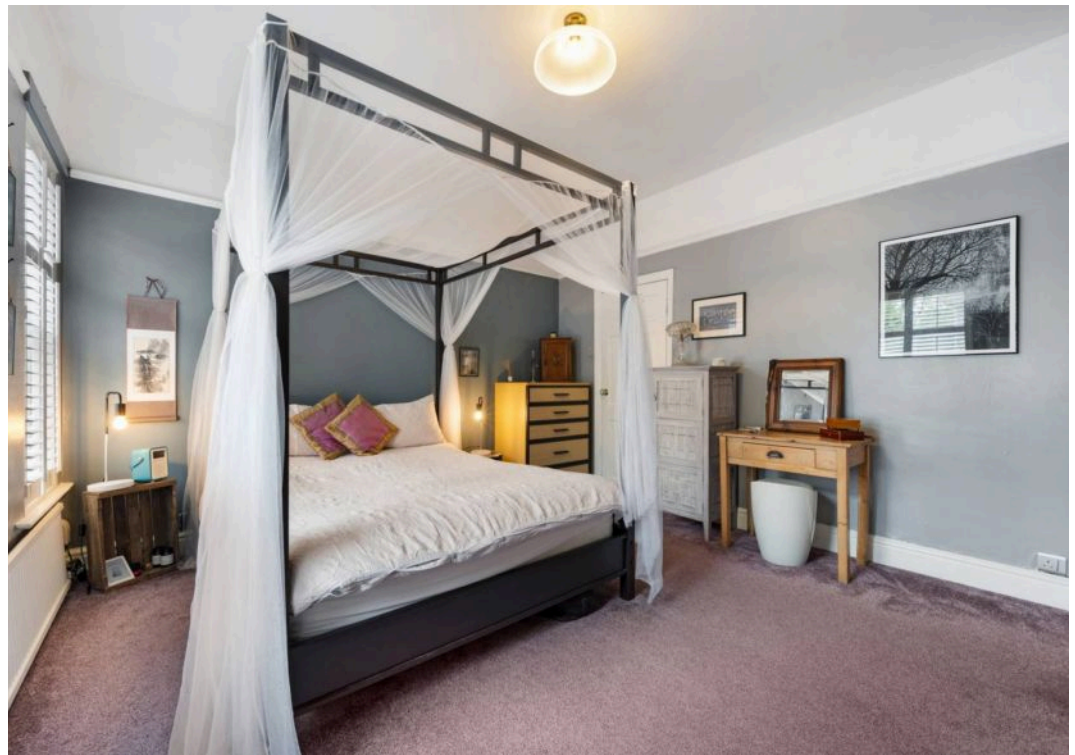
Millbrooke Estate Agents are delighted to offer for sale this charming, two bedroom Edwardian property, located on the highly desirable Swinton / Worsley border.

Council Tax band: B

Tenure: Freehold

- Charming Edwardian Property
- Two Double Bedrooms Plus Loft Room
- Two Generous Reception Rooms
- Private Mature Garden
- Beautifully Presented Throughout
- Highly Desirable South Swinton Location
- Catchment Area for Broadoak School
- Excellent Transport Links
- Freehold Property
- Many Local Amenities



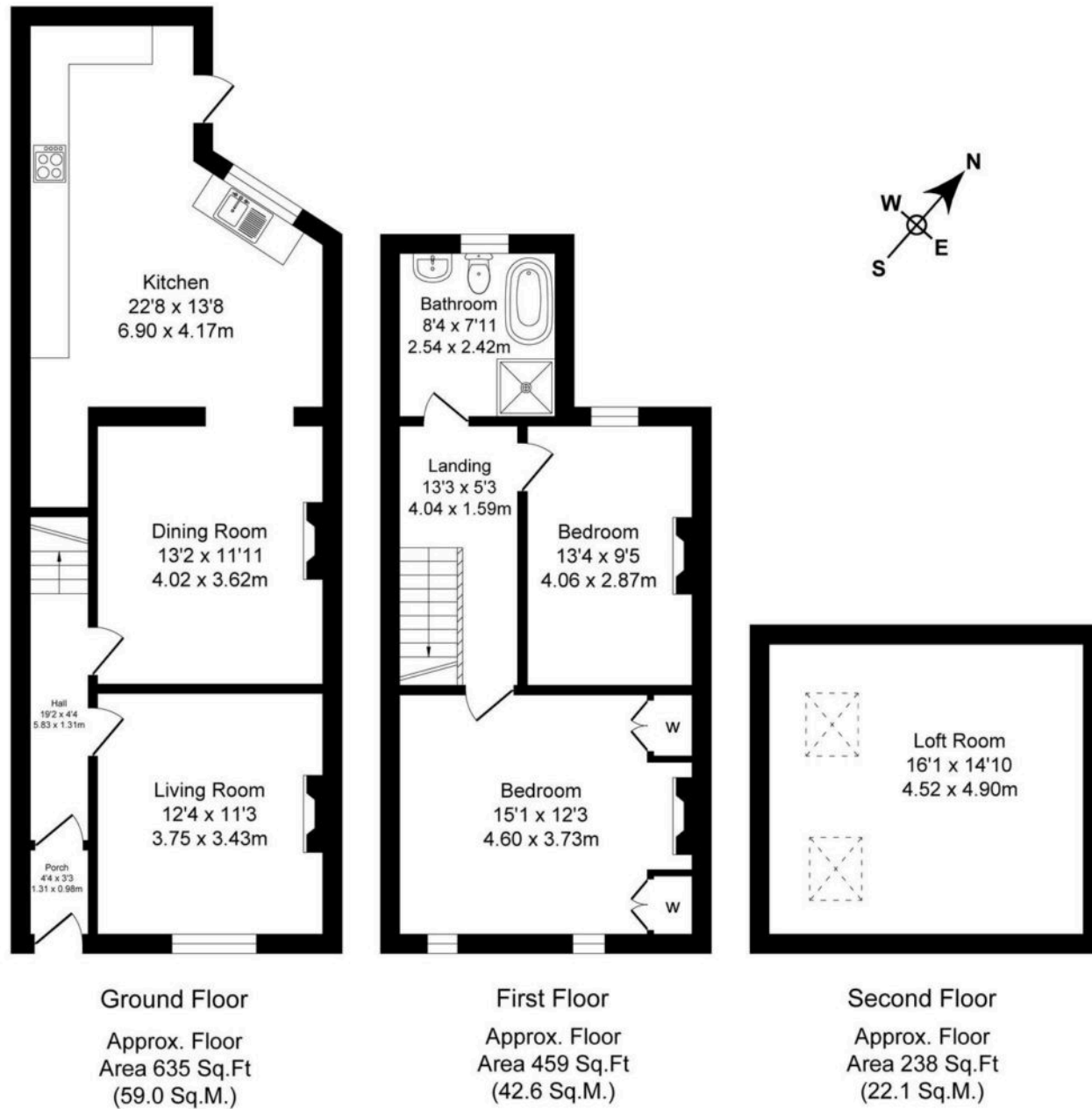


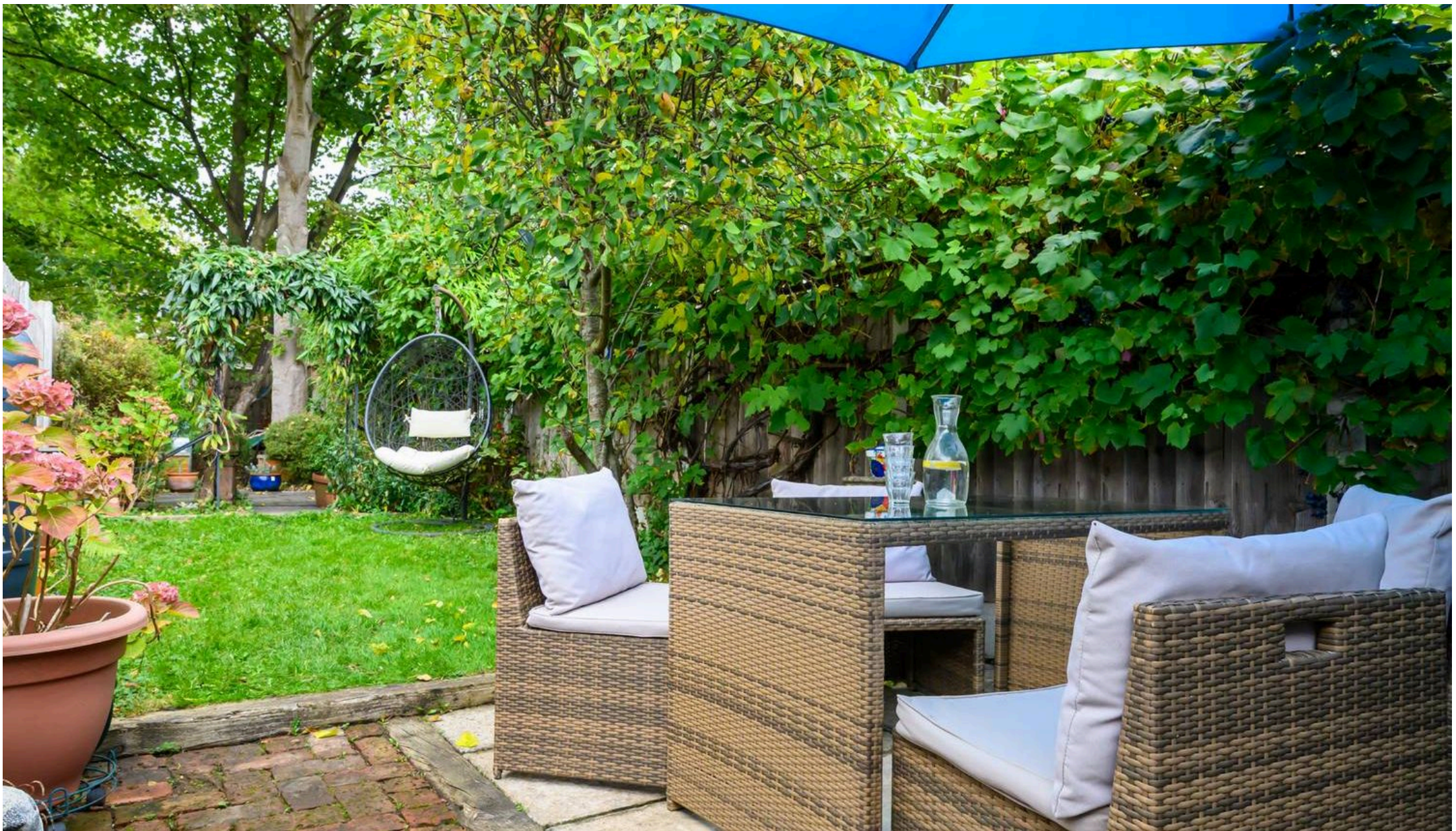


Ringlow Park Road

Total Approx. Floor Area 1332 Sq.ft. (123.7 Sq.M.)

Surveyed and drawn by Lens Media for illustrative purposes only. Not to scale. Whilst every attempt was made to ensure the accuracy of the floor plan, all measurements are approximate and no responsibility is taken for any error.





Millbrooke Estate Agents

271 Mosley Common Road, Worsley, Manchester - M28 1BZ

0161 790 5154 • hello@millbrooke.co • millbrooke.co

