

110 Campbell Road, Swinton

Offers Over £375,000



# 110 Campbell Road

Swinton, Manchester

Millbrooke Estate Agents are delighted to bring to the market this incredible three bedroom, townhouse property.

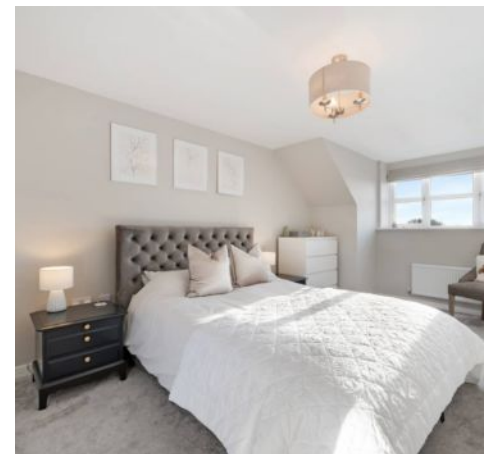
Council Tax band: C

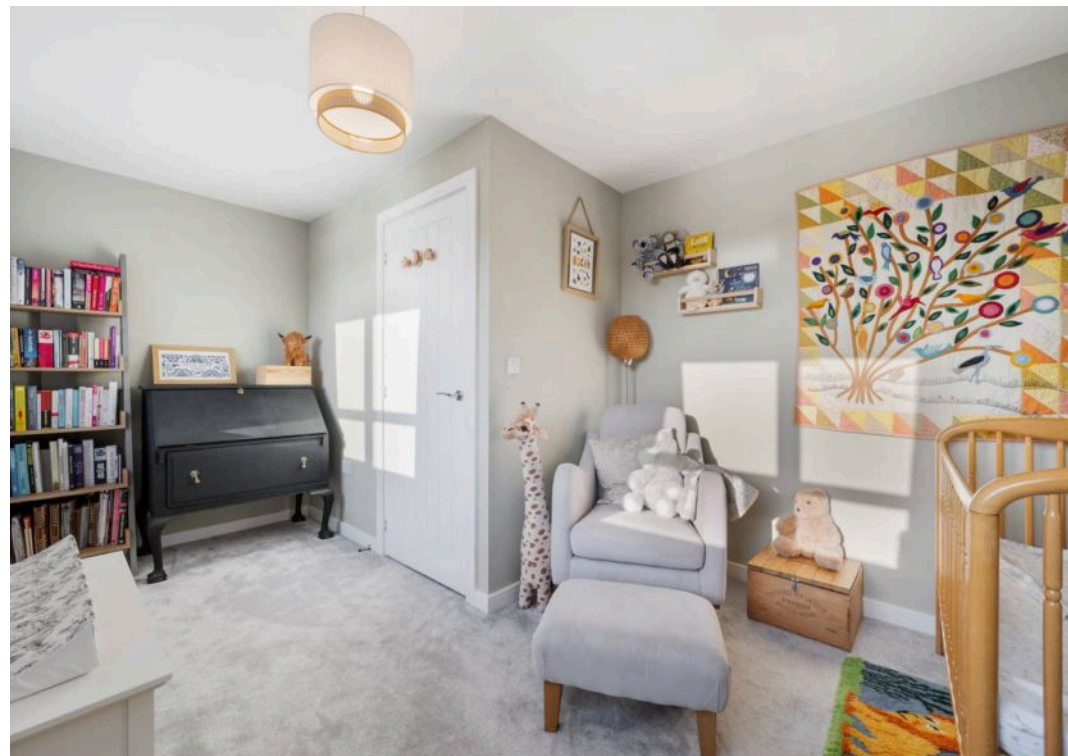
Tenure: Freehold

EPC Energy Efficiency Rating: B

EPC Environmental Impact Rating: B

- Immaculately Presented Property
- Located Over Three Floors
- Stylish and Contemporary Interior
- Open Plan Kitchen Diner
- Three Generous Bedrooms
- Two Bathrooms
- Spacious Garden and Off Road Parking
- Close to Local Amenities
- Excellent Transport Links
- Freehold Property





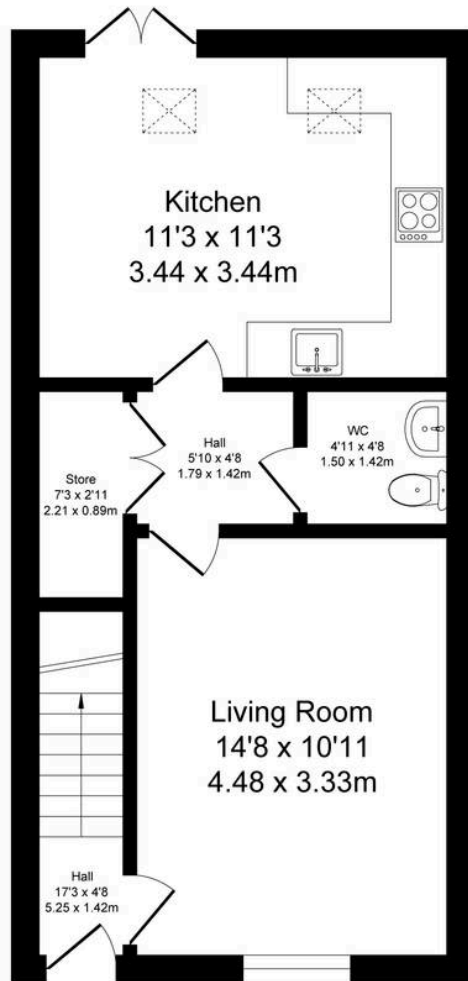




# Campbell Road

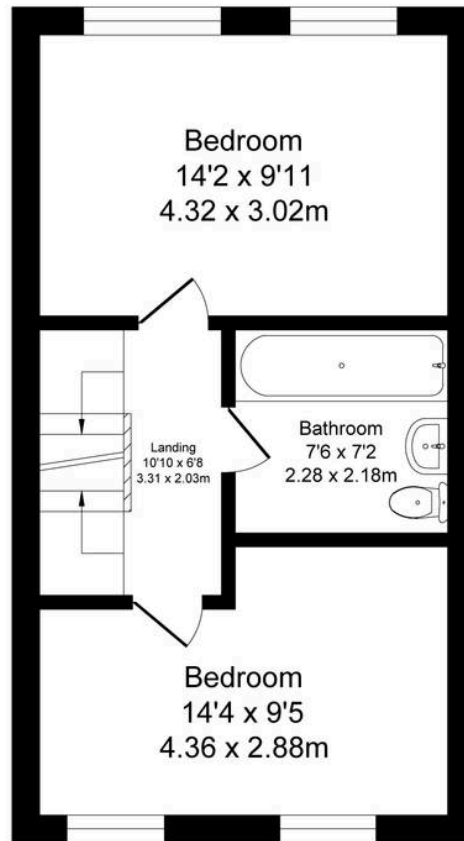
Total Approx. Floor Area 1246 Sq.ft. (115.8 Sq.M.)

Surveyed and drawn by Lens Media for illustrative purposes only. Not to scale. Whilst every attempt was made to ensure the accuracy of the floor plan, all measurements are approximate and no responsibility is taken for any error.



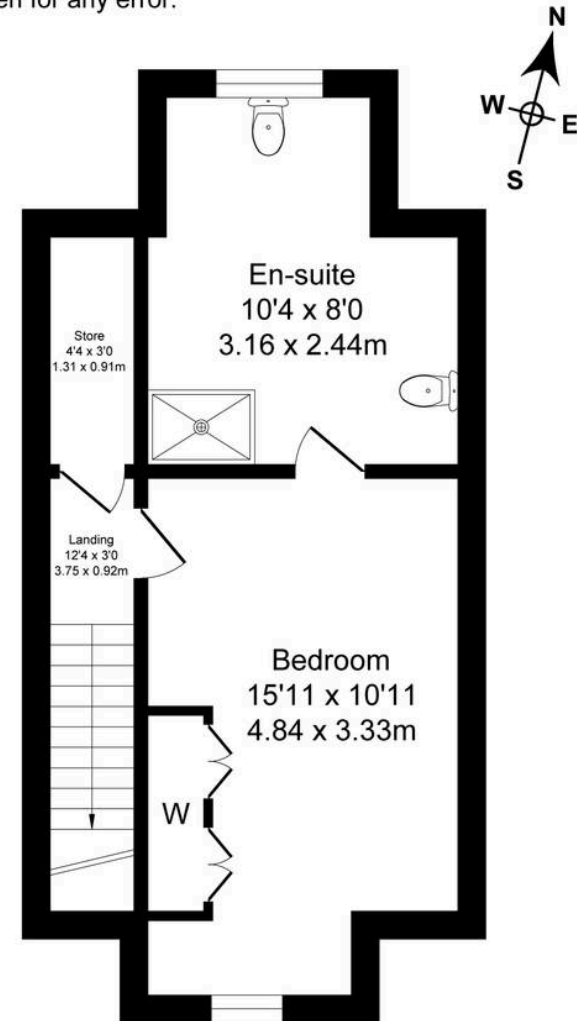
Ground Floor

Approx. Floor  
Area 454 Sq.Ft  
(42.2 Sq.M.)



First Floor

Approx. Floor  
Area 395 Sq.Ft  
(36.7 Sq.M.)



Second Floor

Approx. Floor  
Area 397 Sq.Ft  
(36.9 Sq.M.)





## Millbrooke Estate Agents

271 Mosley Common Road, Worsley, Manchester - M28 1BZ

0161 790 5154 • [hello@millbrooke.co](mailto:hello@millbrooke.co) • [millbrooke.co](http://millbrooke.co)

