

45 Jasper Avenue, Worsley
£425,000

45 Jasper Avenue

Worsley, Manchester

Millbrooke Estate Agents are thrilled to offer for sale this immaculate 4-bedroom, executive, detached property, nestled in a prime location on Jasper Avenue.

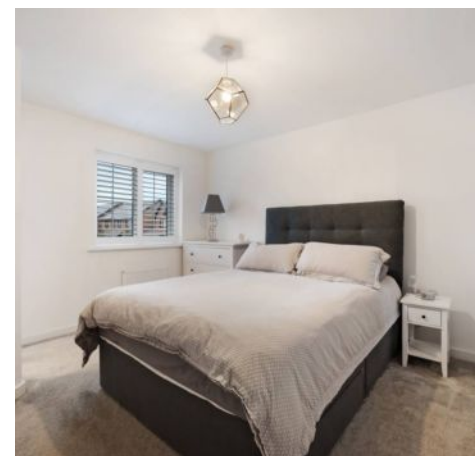
Council Tax band: E

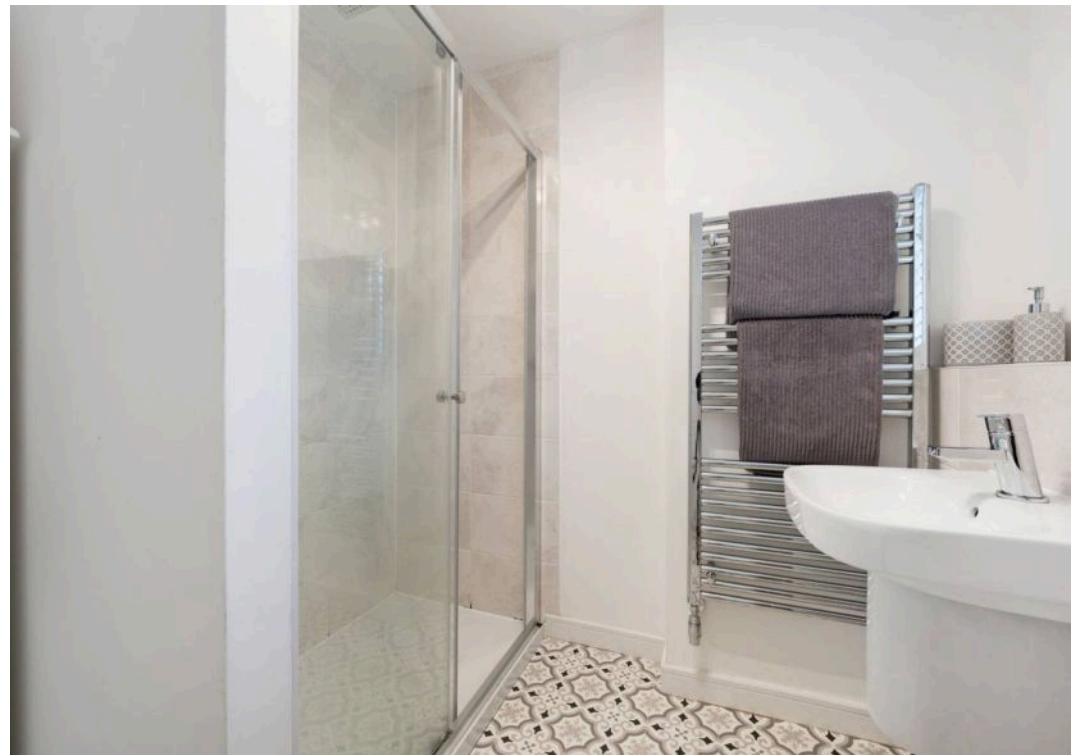
Tenure: Freehold

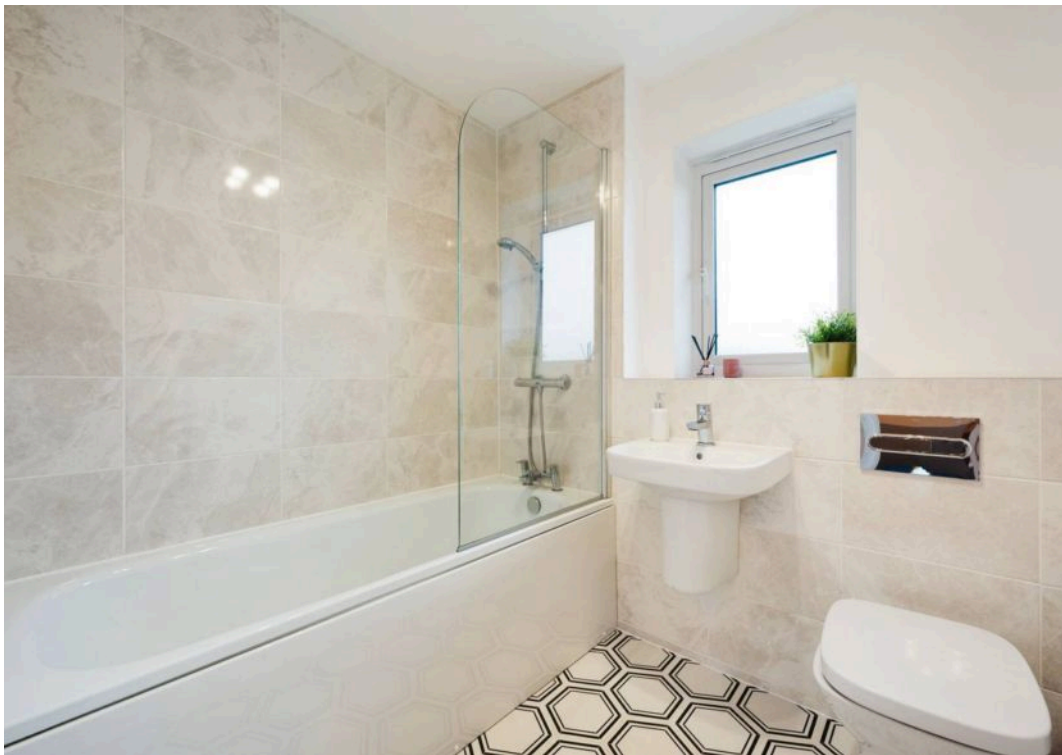
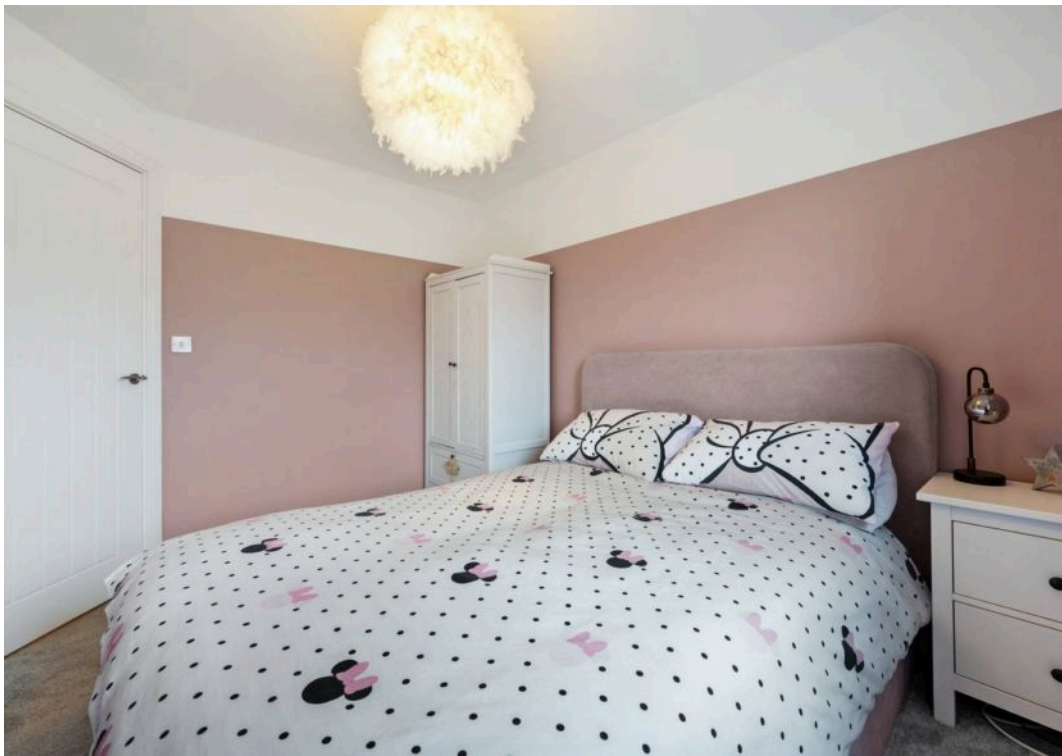
EPC Energy Efficiency Rating: B

EPC Environmental Impact Rating: B

- Fabulous Executive Detached Home
- Four Double Bedrooms
- Open-Plan Kitchen / Diner with Separate Utility Room
- Two Bathrooms and Guest W/C
- Finished to an Exceptional Standard Throughout
- Garage and Driveway Parking
- Generous Private Rear Garden
- Immaculate 'Turn Key' Property
- Close to Many Local Amenities
- Excellent Transport Links



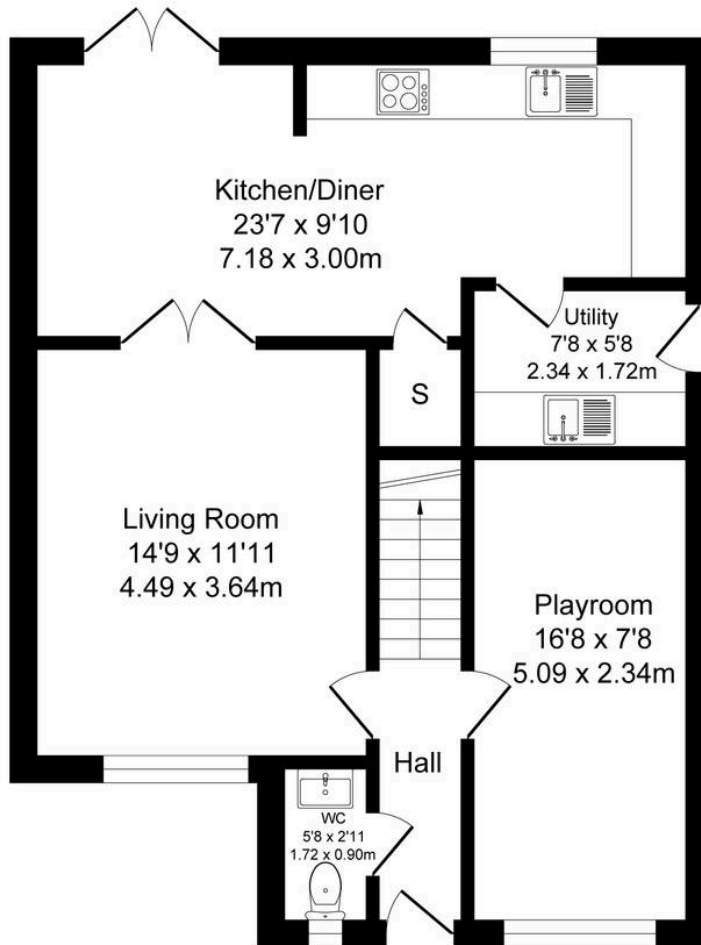
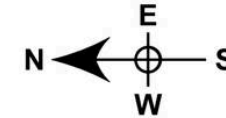




Jasper Avenue, Worsley

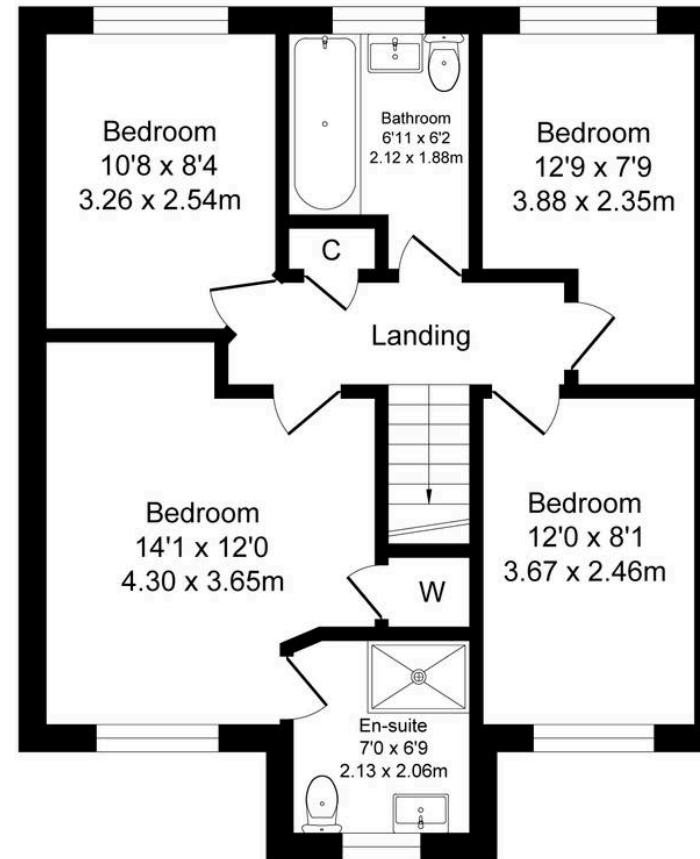
Total Approx. Floor Area 1293 Sq.ft. (120.1 Sq.M.)

Surveyed and drawn by Lens Media for illustrative purposes only. Not to scale. Whilst every attempt was made to ensure the accuracy of the floor plan, all measurements are approximate and no responsibility is taken for any error.



Ground Floor

Approx. Floor Area 677 Sq.Ft (62.9 Sq.M.)



First Floor

Approx. Floor Area 616 Sq.Ft (57.2 Sq.M.)



Millbrooke Estate Agents

271 Mosley Common Road, Worsley, Manchester - M28 1BZ

0161 790 5154 • hello@millbrooke.co • millbrooke.co

