



Millbrooke
ESTATE AGENTS

39 Hazelhurst Road, Worsley
Offers Over £395,000

39 Hazelhurst Road

Worsley, Manchester

Millbrooke Estate Agents are delighted to bring to the market this beautiful Victorian, Semi Detached property which boasts an enviable position on Hazlehurst Road in Worsley.

Council Tax band: D

Tenure: Freehold

EPC Energy Efficiency Rating: D

EPC Environmental Impact Rating: D

- Semi Detached Period Property
- Three Generous Bedrooms
- Open Plan Dining Kitchen With Sun Room
- Two Large Reception Rooms
- Character Property With Original Features
- Large Detached Garage
- Wrap Around Gardens
- Freehold Property
- No Onward Chain!
- Very Sought After Location Close To Broadoak Primary School



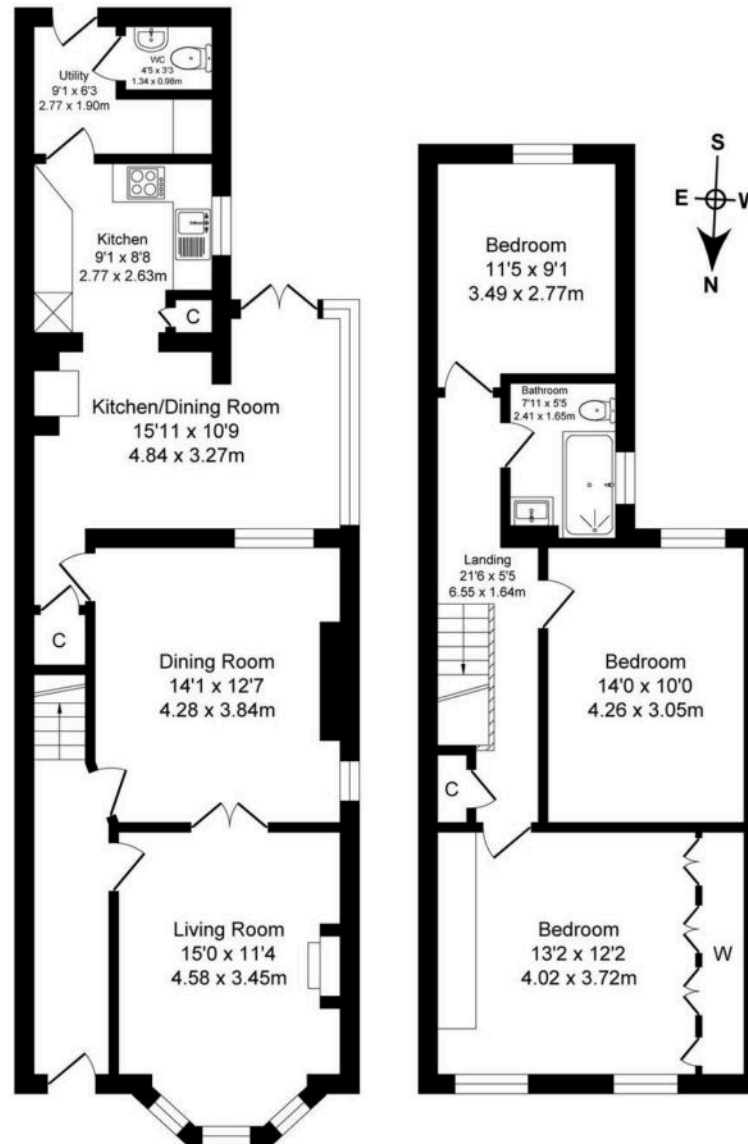




Hazelhurst Road

Total Approx. Floor Area 1354 Sq.ft. (125.8 Sq.M.)

Surveyed and drawn by Lens Media for illustrative purposes only. Not to scale. Whilst every attempt was made to ensure the accuracy of the floor plan, all measurements are approximate and no responsibility is taken for any error.



Ground Floor
Approx. Floor Area 756 Sq.Ft (70.2 Sq.M.)

First Floor
Approx. Floor Area 598 Sq.Ft (55.6 Sq.M.)



Millbrooke Estate Agents

271 Mosley Common Road, Worsley, Manchester - M28 1BZ

0161 790 5154 • hello@millbrooke.co • millbrooke.co

