



15 Old Mill Lane, Worsley

Offers in Region of **£270,000**

15 Old Mill Lane

Worsley, Manchester

Millbrooke Estate Agents are delighted to offer for sale this immaculately presented three-bedroom mews property.

Council Tax band: B

Tenure: Leasehold

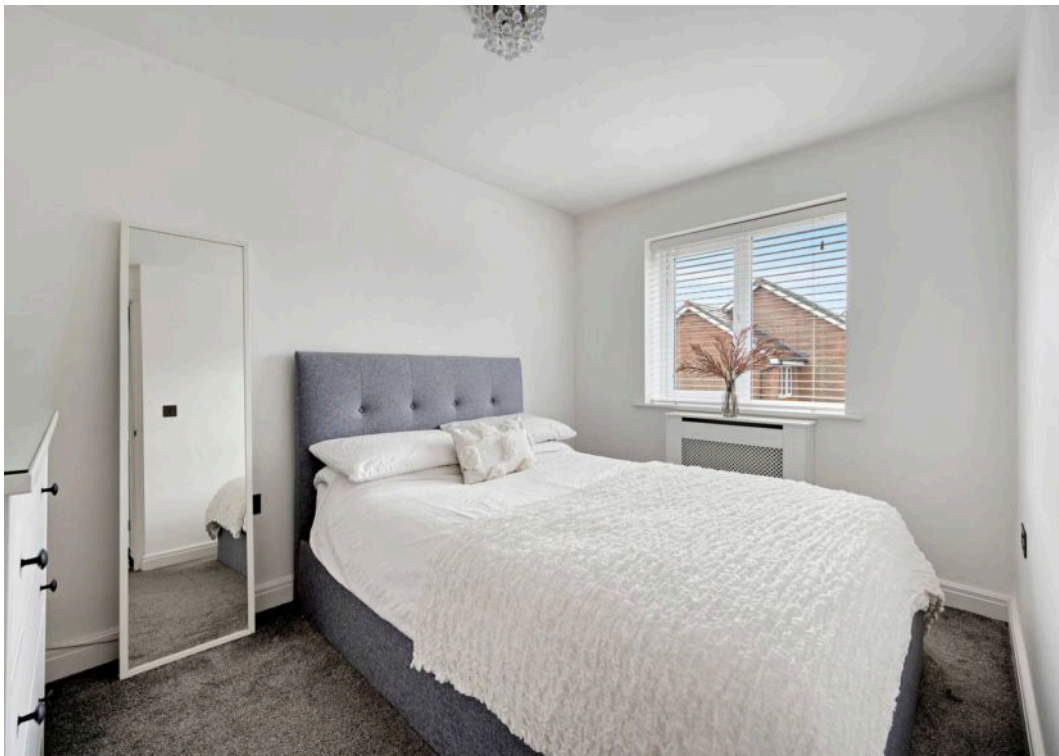
EPC Energy Efficiency Rating: B

EPC Environmental Impact Rating: B

- Immaculately Presented Throughout
- Superb Open-Plan Dining Kitchen
- Three Good Sized Bedrooms
- Family Bathroom & Guest W/C
- South Facing Rear Garden
- Allocated Parking
- Highly Desirable Location
- Many Local Amenities
- Excellent Transport Links
- No Onward Chain



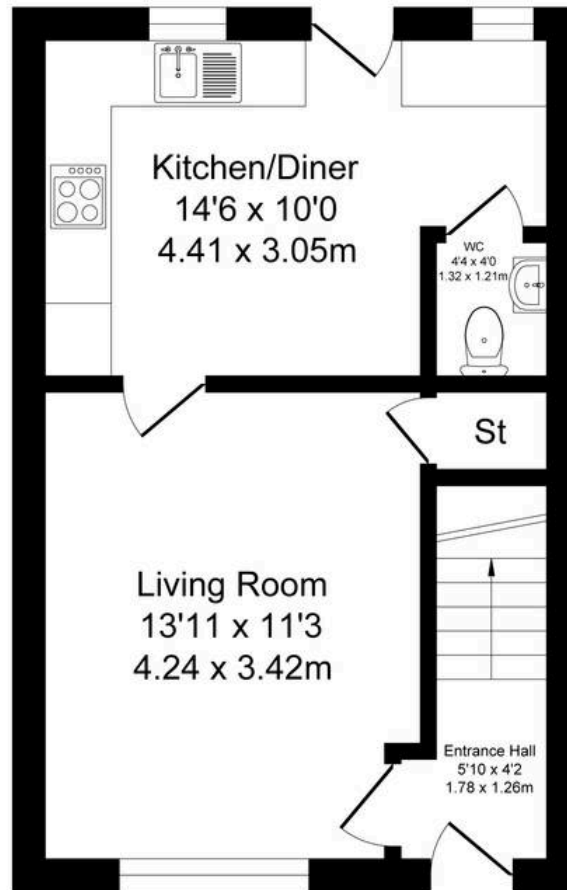




Old Mill Ln Walkden, Worsley

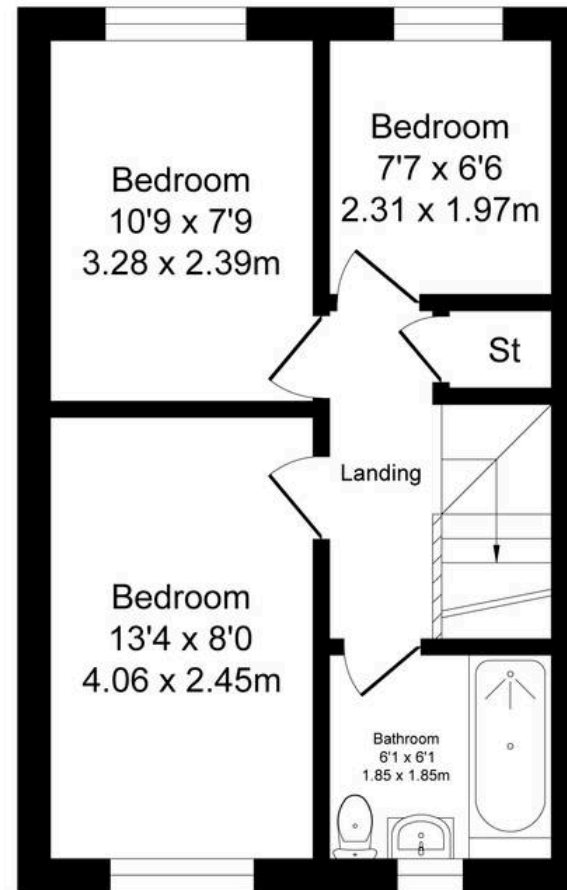
Total Approx. Floor Area 730 Sq.ft. (67.8 Sq.M.)

Surveyed and drawn by Lens Media for illustrative purposes only. Not to scale. Whilst every attempt was made to ensure the accuracy of the floor plan, all measurements are approximate and no responsibility is taken for any error.



Ground Floor

Approx. Floor Area 365 Sq.Ft
(33.9 Sq.M.)



First Floor

Approx. Floor Area 365 Sq.Ft
(33.9 Sq.M.)





Millbrooke Estate Agents

271 Mosley Common Road, Worsley, Manchester - M28 1BZ

0161 790 5154 • hello@millbrooke.co • millbrooke.co

