

6 Meadow View, Worsley  
£390,000



## 6 Meadow View

Worsley, Manchester

Millbrooke are delighted to offer for sale this superb three-bedroom, three-storey home boasting stylish, flexible living space ideal for families and professionals alike.

Council Tax band: D

Tenure: Leasehold

EPC Energy Efficiency Rating: B

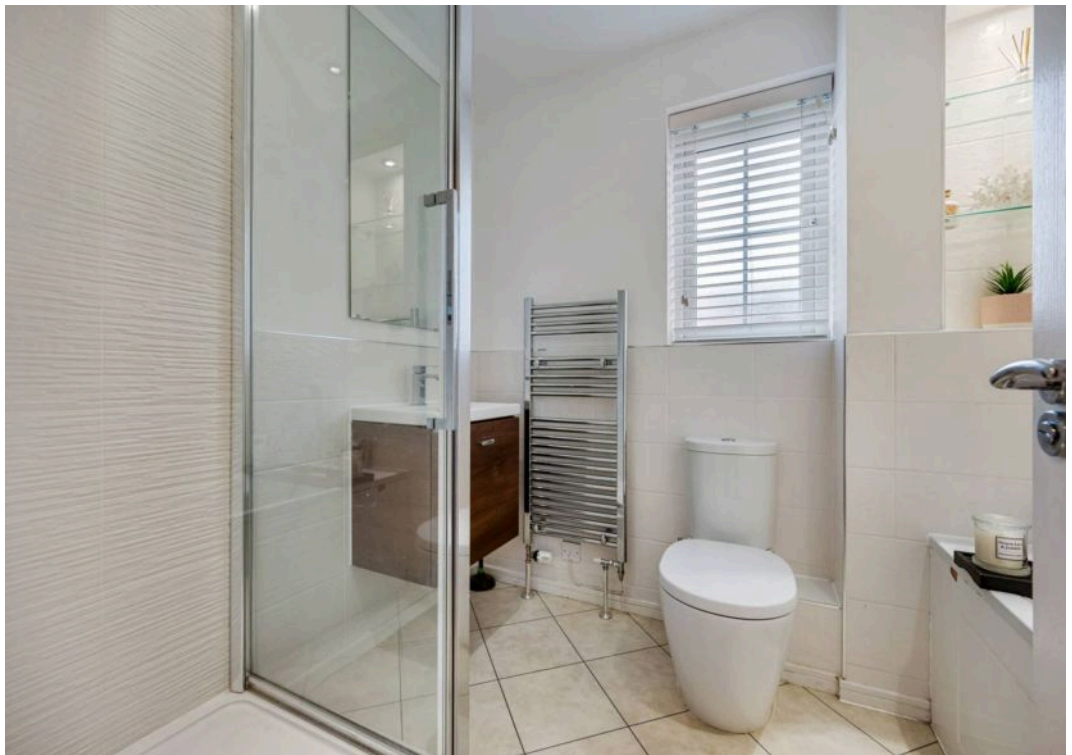
EPC Environmental Impact Rating: B

- Contemporary Semi-Detached Property
- Generous Accommodation Over Three Floors
- Open Plan Kitchen / Diner
- Stylish Lounge
- Three Bedrooms & Four Piece Family Bathroom
- Stunning Second Floor Master Bedroom With En Suite
- Low Maintenance Rear Garden with Fabulous Garden Room
- No Onward Chain!
- Many Local Amenities
- Excellent Transport Links





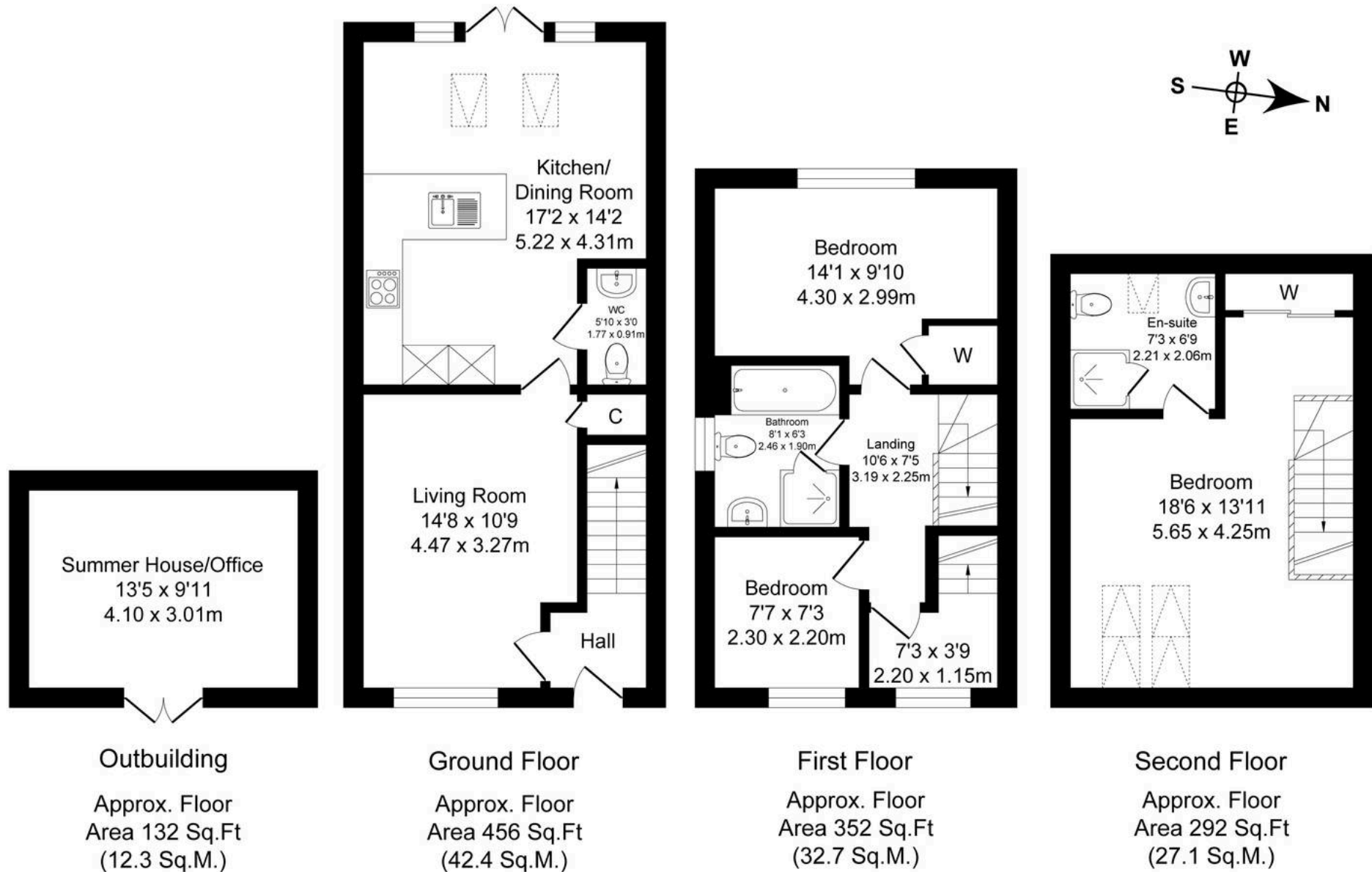




# Meadow View

Total Approx. Floor Area 1232 Sq.ft. (114.5 Sq.M.)

Surveyed and drawn by Lens Media for illustrative purposes only. Not to scale. Whilst every attempt was made to ensure the accuracy of the floor plan, all measurements are approximate and no responsibility is taken for any error.







## Millbrooke Estate Agents

271 Mosley Common Road, Worsley, Manchester - M28 1BZ

0161 790 5154 • [hello@millbrooke.co](mailto:hello@millbrooke.co) • [millbrooke.co](http://millbrooke.co)

