



Millbrooke
ESTATE AGENTS

4 Brett Road, Worsley
£390,000

4 Brett Road

Worsley, Manchester

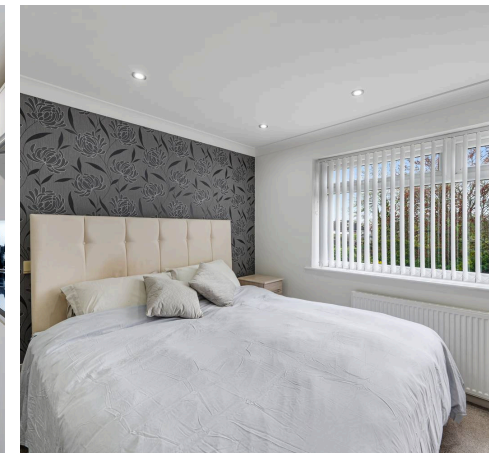
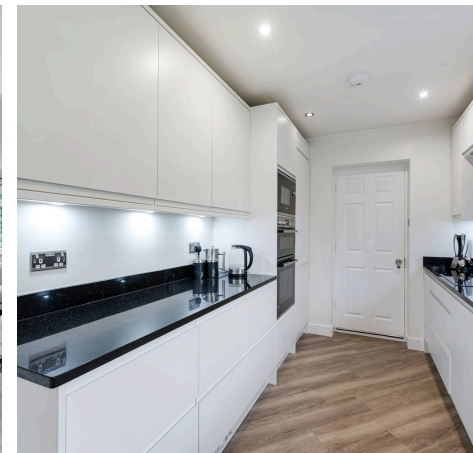
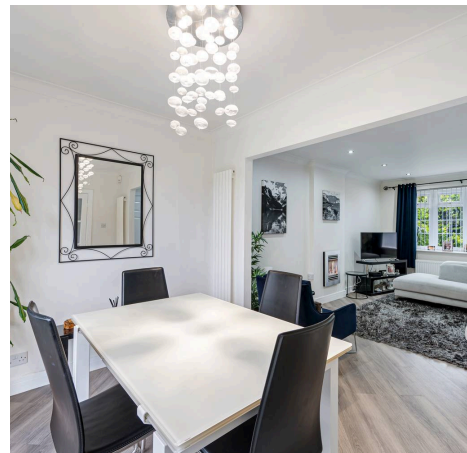
Council Tax band: D

Tenure: Freehold

EPC Energy Efficiency Rating: D

EPC Environmental Impact Rating: D

- Three Bedroom Link-Detached Property
- Generous Living Accommodation
- Beautifully Presented Throughout
- Stylish & Contemporary Fitted Kitchen
- Garage & Driveway
- Private, South Facing Garden
- Freehold Property
- Many Local Amenities
- Highly Desirable Boothstown Location
- Excellent Transport Links



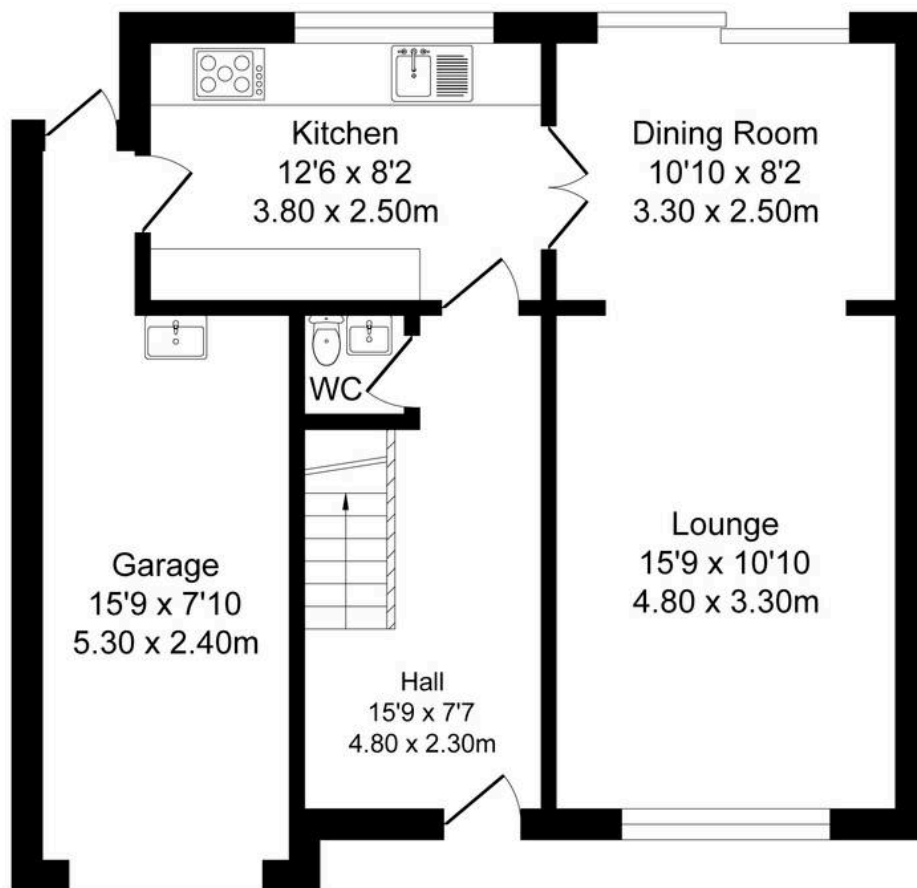




4 Brett Rd, Worsley, Manchester M28 1JZ, UK

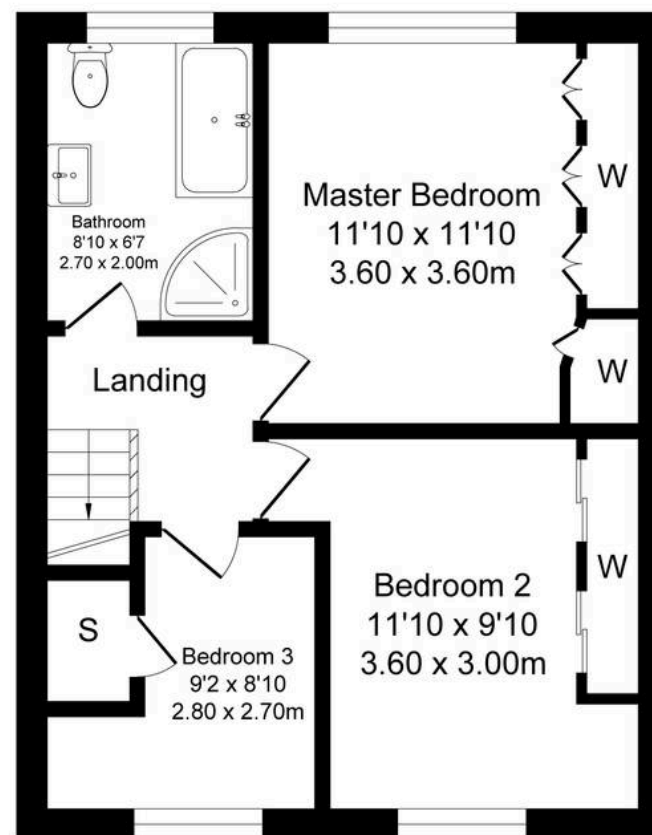
Total Approx. Floor Area 1127 Sq.ft. (104.7 Sq.M.)

Surveyed and drawn by Lens Media for illustrative purposes only. Not to scale. Whilst every attempt was made to ensure the accuracy of the floor plan, all measurements are approximate and no responsibility is taken for any error.



Ground Floor

Approx. Floor Area 666 Sq.Ft (61.9 Sq.M.)



First Floor

Approx. Floor Area 461 Sq.Ft (42.8 Sq.M.)





Millbrooke Estate Agents

271 Mosley Common Road, Worsley, Manchester - M28 1BZ

0161 790 5154 • hello@millbrooke.co • millbrooke.co

