



Millbrooke
ESTATE AGENTS

5 Mort Lane, Tyldesley
£250,000

5 Mort Lane

Tyldesley, Manchester

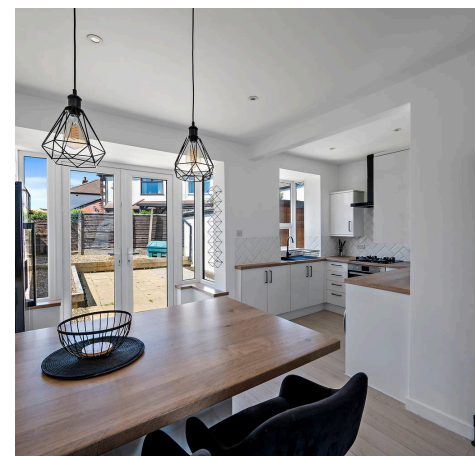
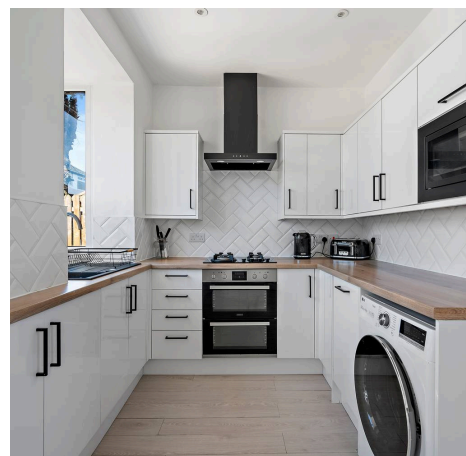
Council Tax band: C

Tenure: Leasehold

EPC Energy Efficiency Rating: D

EPC Environmental Impact Rating: E

- Fantastic Semi-Detached Property
- For Sale With No Onward Chain
- Contemporary Open-Plan Living
- Stylish Kitchen / Diner
- Three Bedrooms & Modern Bathroom
- Immaculately Presented Throughout
- Spacious Driveway Plus Garage
- Private Garden
- Highly Sought After Location - Excellent Local Schools
- Well Positioned For A580 & Direct Busway Into Manchester



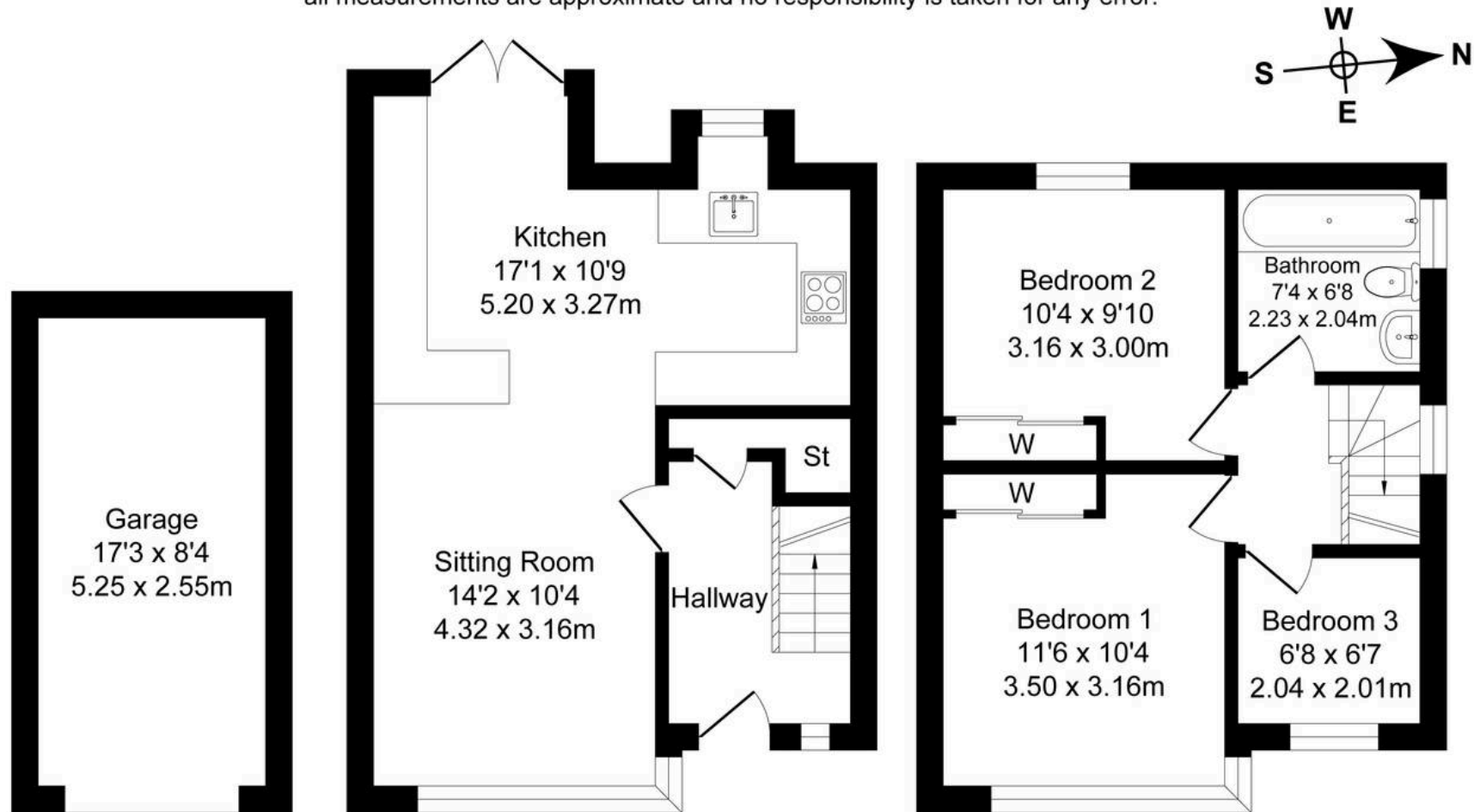




Mort Lane

Total Approx. Floor Area 909 Sq.ft. (84.5 Sq.M.)

Surveyed and drawn by Lens Media for illustrative purposes only. Not to scale. Whilst every attempt was made to ensure the accuracy of the floor plan, all measurements are approximate and no responsibility is taken for any error.



Garage

Approx. Floor Area 143 Sq.Ft (13.3 Sq.M.)

Ground Floor

Approx. Floor Area 398 Sq.Ft (37.0 Sq.M.)

First Floor

Approx. Floor Area 368 Sq.Ft (34.2 Sq.M.)



Millbrooke Estate Agents

271 Mosley Common Road, Worsley, Manchester - M28 1BZ

0161 790 5154 • hello@millbrooke.co • millbrooke.co

